

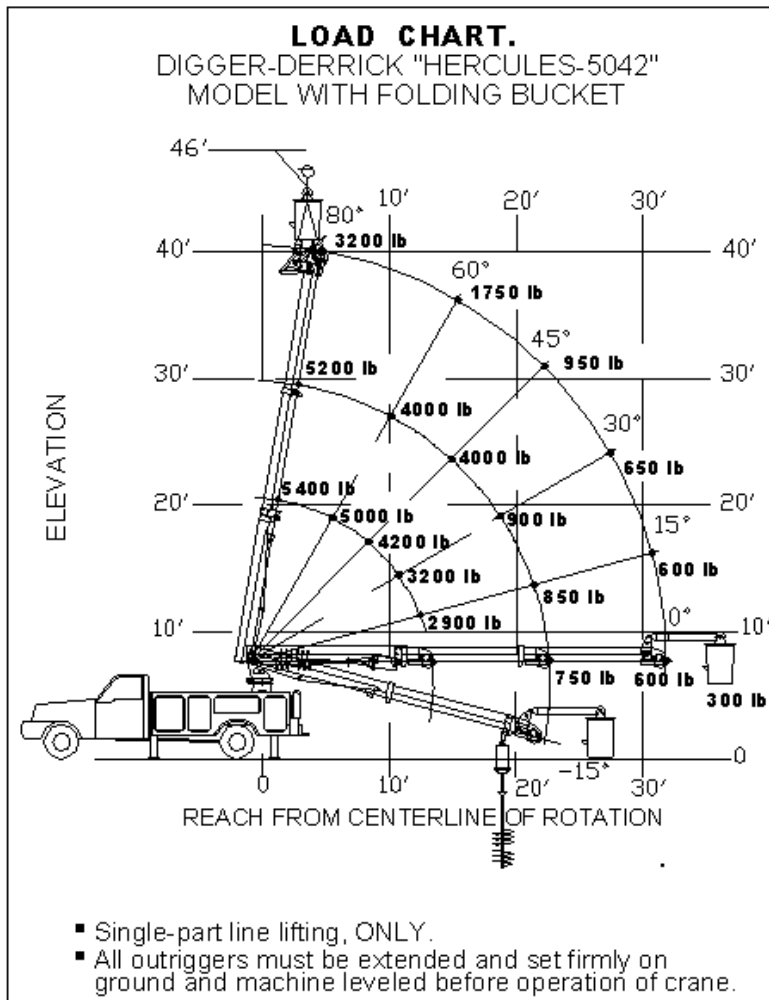
UTV INTERNATIONAL

HERCULES 5042 DIGGER DERRICK/AERIAL LIFT ON FORD F-550 **FLAT BED**

STANDARD SPECIFICATIONS	
LIFTING CAPACITY:	5,400lbs @ 8 ft
SHEAVE HEIGHT:	42'
BUCKET HEIGHT	45' ft Reach
PLANETARY WINCH CAPACITY:	5,000lbs
AUGER DIGGING RANGE	12' - 19' ft
BOOM CHARACTERISTICS	
<ul style="list-style-type: none">• HYDRAULIC POWERED THREE STAGE TELESCOPIC BOOM• HYDRAULIC 4 WAY POLE CLAW• 340 DEGREE NON CONTINUOUS ROTATION (OPTION 10D CONT. ROTATION)• CENTER MOUNT PEDESTAL OVER REAR AXLE WITH BOOMS STOWED TOWARD FRONT• OVERLOAD PROTECTION SYSTEM WITH MANUAL OVERRIDE• BOOM WITH FULLY HYDRAULIC CONTROLS AND TURRET MOUNT SEAT FOR MAXIMUM COMFORT• 40-GALLON HYDRAULIC OIL RESERVOIR• RIGHT HAND AUGER STOW BRACKET WITH OVERSTOW ROPE PROTECTION• 7' X 7' FLAT BED WITH 10" HIGH WOODEN SIDE WALL• 4 HYDRAULICALLY OPERATED RADIAL OUTRIGGERS• MOUNTED ON 4X4 FORD F-550 CHASSIS 84" CA• HYDRAULIC BOOM WINCH 5000LBS @ 2550 PSI (BARE DRUM)	

DIGGER DERRICK OPTIONS			
ADD OPTION	OPTION #		
	1D	INSULATED FIBERGLASS 3 RD BOOM	INSULATED FOR CATEGORY "C" TYPE BOOMS: 46 kV
	2D	FIBERGLASS 4 TH BOOM	WITH FOLDING BUCKET (42" x 24" x 24") ATTACHMENT
	2D-1	PROPORTIONAL RADIO CONTROLS FOR BUCKET	PROPORTIONAL FUNCTIONS <ul style="list-style-type: none"> • BOOM ROTATION: CW-CCW • BOOM ELEVATION: UP-DOWN • SECOND BOOM EXTENSION: IN-OUT • THIRD BOOM EXTENSION: IN-OUT • WINCH: UP-DOWN NON PROPORTIONAL RADIO CONTROLS <ul style="list-style-type: none"> • POLE CLAW: OPEN-CLOSE (ON/OFF) • POLE CLAW TILT: UP-DOWN (ON/OFF)
	2D-2	TOP HYDRAULIC CONTROLS FOR BUCKET	PROPORTIONAL FUNCTIONS <ul style="list-style-type: none"> • BOOM ROTATION: CW-CCW • BOOM ELEVATION: UP-DOWN • SECOND BOOM EXTENSION: IN-OUT • THIRD BOOM EXTENSION: IN-OUT • WINCH: UP-DOWN
	2D-3	BASKET FOR RADIO	ATTACHED ON THE SIDE OF THE BUCKET
	4D	LINER	TO FIT BUCKET SIZE W/ HOLDING BRACKET
	5D	AUGER DRIVE WITH 2.5" HEXAGONAL SHAFT:	10,000 ft-lbs TWO SPEED
	6D-1 6D-2 6D-3	AUGER TYPES AVAILABLE:	16" DIRT AUGER 16" ROCK AUGER OTHER AUGER SIZES AVAILABLE
	7D-4	AUGER OPTIONS	4'-6' KILABAR

	3D	INDEPENDENT POWER UNIT	INCLUDES DOUBLE PUMP HYDRAULIC SYSTEM & COOLER FOR SUPERIOR DIGGING PERFORMANCE
	8D	HYDRAULIC TOOL OUTLET WITH 25 ft, 3/8" NON-CONDUCTIVE HOSES ON A SPRING RETURN HOSE REEL WITH STOPPERS AND FLOW CONTROL	
	9D	PINTLE HOOK FOR TRAILER WITH ELECTRIC PLUG	
	10D	CONTINUOUS ROTATION BOOM	
	11D	GROUND CABLE ON HOSE REEL	
	12D	ELECTRIC WINCH 16500 lbs	
OTHER OPTIONS AVAILABLE UPON REQUEST			



UTV INTERNATIONAL

8650 Darnley Road
Mont-Royal, (QC)
H4T 1M4

Local: 514-345-0990
Toll: 1-800-985-8665
Fax: 514-345-0956

www.utvint.com

