

Achiever DPM-52 DU 55 ft Tracked Aerial with Jib DUAL UNIT BOOM SPECIFICATIONS

<u>GENERAL DATA</u>			
Max. working height	55'	Basket capacity	
Max. side reach	31'-6"	(Jib not in use)	550 lbs
Stowed travel height	9'-3" (approx.)	(Jib in use)	400 lbs
Extension boom travel	120"	Max. jib and winch capacity	1,000 lbs
Main boom travel	-35° to +80°	Base installed weight	16,650 lbs (approx.)
Articulated boom travel	-0° to +80°		
<u>STANDARD FEATURES</u>			
Side mount winch and jib		Basket rotator, winch, and jib controls with lockouts in upper control pod	
24" x 42" x 42" fiberglass basket with step		Lower control levers with upper control override	
Rubber boom support		Lower winch control	
Fiberglass extension boom		Deck step basket mounting	
Shear ball rotation gear		Hydraulic jib tilt	
Proportional, open center hydraulic controls		Manual jib extension	
Safety harness and 6' decelerating lanyard		Non-relube, maintenance-free bushings, spherical cylinder rod ends	
360° continuous rotation		Engine start/stop from basket	
180° basket rotator		46 KV category "C" insulation	
10 micron filter in return line		24" pedestal height for tracked vehicle mounting	
Hyd leveled basket (power stow at upper controls)		Epoxy primer with white finish color	
Hydraulic basket leveling at lower controls (2nd location)		Two maintenance/operators manuals	
Upper 4 axis single hand joystick control lever		One year parts and labor warranty	
<u>AVAILABLE BOOM OPTIONS</u>			
Boom:		Electrical:	
Main boom fiberglass insert (provides 14" of insulation when fully retracted)		Controls w/high electrical resistant components (HERC) - required for category "C"	
Articulating arm glass insert (12" insulation gap)		Boom overstay protection	
		12 volt emergency hydraulics: boom rotation, lowering and all outrigger functions	
Basket:		Hydraulic:	
Basket liner w/step (24" x 42" basket)		Hydraulically extendible jib	
Rigid basket cover with lanyard		Tool circuit at basket, manual control	
Rigid basket & upper control cover w/lanyard		Tool circuit at base, manual control	
Tool tray (8" X 19" X 9")		Hose reel on deck	
Tool tray (9" X 14" X 18")		Miscellaneous:	
Tool tray fiberglass (7" x 7" x 16")		Additional manuals	
Controls Mounted between Basket & Boom		All Specifications + or - 2%	
CARRIER OPTIONS on PAGE 2			

Achiever DPM-52 DU 55 ft Tracked Aerial with Jib

CARRIER SPECIFICATIONS

<u>DIMENSIONS / WEIGHT</u> Overall length 251" boom tip to bucket end 185" between stowed outriggers Overall width 101" without side ladders Height 111" to top of stowed boom Ground clearance 16" Weight 16,650 lbs base vehicle GVWR 24,000 lbs Deck (optional) 43 ft ² (approx. 72"L x 87"W")		<u>FRAME / SUSPENSION</u> Type Welded tub Axle Torsion axle Tires Solid rubber Suspension system: > 2 independent idler wheels with oil bath hubs > 8 solid wheels with grease hubs amd 8 dust cap retainers > 2 rear drive sprockets	
<u>PERFORMANCE</u> Maximum speed 8 mph loaded Turning radius 0 ft Climbing ability - Uphill 40° (84%) - Side-hill 15° (27%) Ground pressure 2.29 PSI (no load) 29" tracks 2.63 PSI (loaded) 29" tracks 2.0 PSI (no load) 33" tracks 2.3 PSI (loaded) 33" tracks Working range 12 hours (no load)		<u>POWER TRAIN FOR HYDROSTATIC DRIVE</u> Transmission Hydrostatic, 2-speed Service Brakes Positive deceleration through the hydrostatic transmission Parking Brakes Multi-disc, spring applied & pressure released	
<u>ENGINE</u> Make Deutz AG Tier 4 Model TCD 3.6 L4, 4 cylinder turbo charged diesel Horsepower 134 HP at 2,300 RPM Torque 369 ft lbs at 1,600 RPM Displacement 3.6 liters Fuel capacity 40 gals DEF tank 2.6 gals		<u>ELECTRICAL</u> Voltage 12 V (2) batteries, capacity 2x 1,060 CCA Alternator capacity 120 Amps Ground Negative	
		<u>TRACKS</u> 5-ply rubber belts with 29" rubber cross links with heat treated aluminum inserts	
		<u>STEERING</u> Independent dual joysticks with cable control for each track	
<u>STANDARD FEATURES</u>			
1-Man open cab ROPS certified to 24,000 lbs Roll Over Protection Structure ISO 3471:2008 Seat with mechanical suspension, 2-point seat belt Full instrumentation, illuminated panel gauge Fire extinguisher, backup alarm and horn High powered LED lights: 2 front & 1 rear on cab, 1 strobe on top, rear back up light Cab entrance step, 2x removable side deck ladders 120v block heater & glow plugs, muffler		12v primary fuel filter heater Secondary fuel filter with water separator Electric engine shut down system 2" receiver socket, front and rear Front and rear rectangular ground lugs (4) 59" radial outriggers w/18"x20" feet, 45° mounts (4) 18,000 lb D-rings Wooden side wall/deck 2 sets of parts & service manuals Standard one year warranty	

*Specifications subject to change without notice.

DPM-52 DU Carrier Options & Accessories

Front bumper in place of plow
Front 2 way plow
19" height extension for plowing snow
Front plow blade with float position

DPM-52 DU Carrier Options continued on next page

DPM-52 DU Carrier Options continued

16,500 lb electric winch with front wiring
Electric winch rear wiring
(2) Side receivers for electric winch with wiring
18,000 lb hydraulic winch, fixed front mount with in cab controls

Cab Options

Driver's front wire mesh screen (open cab)
Driver's left side wire mesh door and side wall (open cab)
Driver's right side wire mesh screen (open cab)
Driver's rear wire mesh screen (open cab)
Aluminum escape hatch for open cab (required when four sides wire mesh)
Steel escape hatch for open or closed cab (adds FOPS Certification)
Opening sunroof (hinged escape hatch with adjustable opening)
Tinted safety glass escape hatch with adjustable opening (not FOPS certified)
Protective brush guard for front LED work lights
Cab mounted front brush guard for closed cab
1 Man Closed Cab ROPS certified to 24,000 lbs includes: Aluminum escape hatch Sliding left & right side window Cab heater & circulation fan Front windshield on/off wiper Door with dual locking system
Front windshield intermittent wiper (closed cab)
Sun visor
Driver's 3 point seat belt
Street side and / or curb side rear view mirror
Street side rear view mirror with electric heating
Back up camera with heated lens and 7" in-cab waterproof display
Outrigger deployed in-cab warning light
Premium cab sound & heat insulation
DC Comfort air conditioning 6,000 BTU/hr, 12V

Lighting Options

GoLight Stryker spotlight on top of cab with guarding & in cab remote control
2x 120 watts LED light bars (behind the cab, swiveling & one fixed over the engine cover)
4x 18 watts around the vehicle ground illumination LEDs (low profile 40° down-angle)
DOT road lighting (includes outrigger mounted clearance lights)
Outrigger mounted clearance lights

DPM-52 DU Carrier Options continued on next page

DPM-52 DU Carrier Options continued

Engine & Cold Weather Options

Spark arrestor
120v hydraulic oil tank heater
120v battery charger
Winter bridge & engine cover
Synthetic engine & ISO 22 hydraulic oil
12v engine coolant heater, 17,000 Btu with 7 day programmable timer
Extreme cold package for operations to -40 deg F/-40 deg C External Power Available includes: 120v battery blanket heaters, insulated battery box, glycol coolant, synthetic engine & hydraulic oil
Extreme cold package for operations to -40 deg F/-40 deg C No External Power Available includes: 12v engine coolant heater, coolant battery heater, insulated battery box, glycol coolant, synthetic engine & hydraulic oil
2x 120v battery heaters
1,800 watt gas powered portable generator / inverter with on deck storage

Track Options

Change 29" to 33" rubber tracks
Ice claws for tracks (17 each side)

Vehicle Options / Features

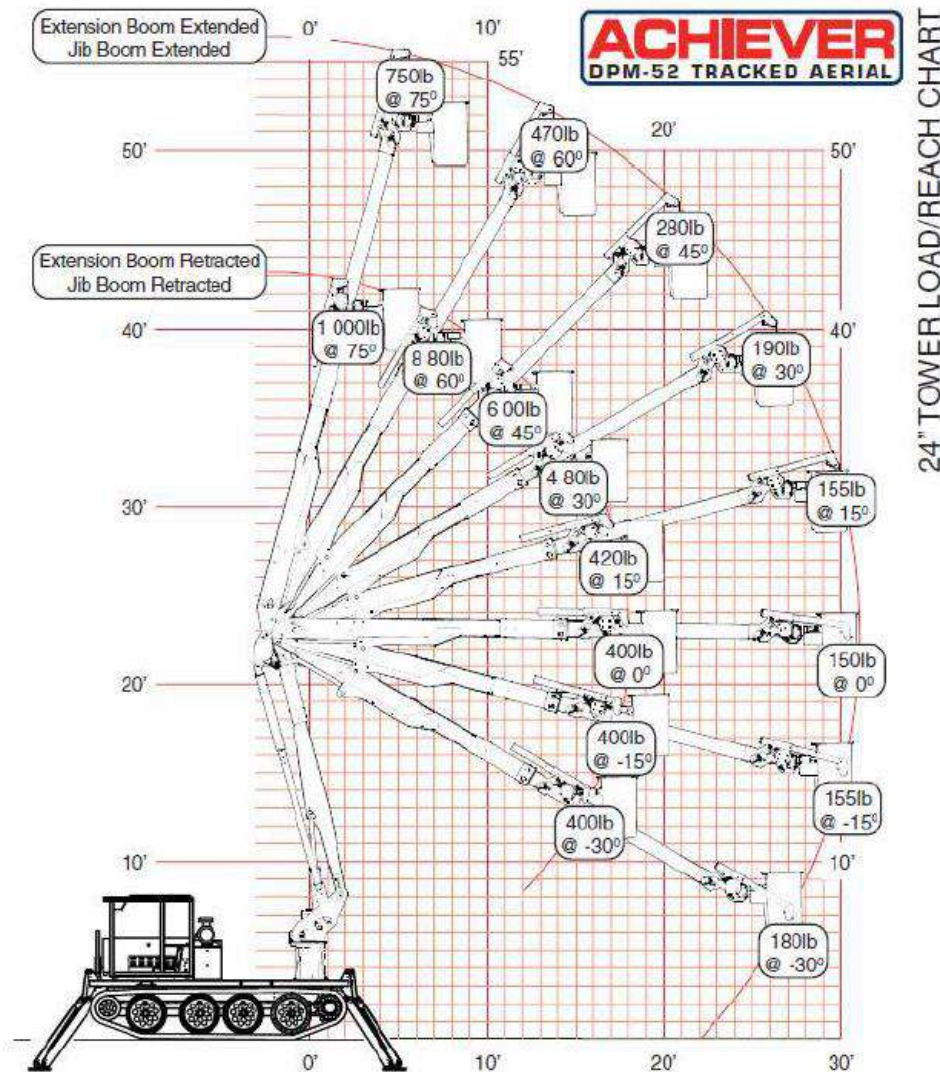
Tool box on deck (front right side)
Cargo tie downs on deck, 2,000 lb capacity (2x D-rings, 2x tie down posts)
Non slip coating on deck
Change 59" to extra long front outriggers (71 In) for higher lift on Hills w/18"x20" feet (allows deck levelling to within 5° on 12° slopes)
Change 59" to extra long rear outriggers (71 In) for higher lift on Hills w/10"x10" feet (allows deck levelling to within 5° on 12° slopes)
Ice Cleats for outrigger feet (4 each foot)
Outrigger feet ice cleat ready
(8) Road wheel oil hubs
Hydraulic tools outlet on deck with hose reel with twin orange dielectric hoses 3/8"(dia) x 30'(Lg) and flow control
Cable grounding reel on deck, spring loaded, 50 ft 1/0 black cable & clamp
Pintle hook
Maintenance kit (high performance filter set for first 100 hour maintenance Return & Supercharge Filters)
Additional sets of boom and carrier manuals

Additional Available Options

Recommended spare parts for remote operations
One full day on site operations and maintenance training

Other options available upon request

Achiever DPM-52 DU 55 ft Tracked Aerial with Jib



March 2014

WWW.UTVINT.COM

1-800-985-8665



BUCKET/JIB USAGE RESTRICTIONS

2 MAN BUCKET

- Bucket capacity = 550lb
- Bucket capacity with liner = 500lb
- Jib use;
 - Bucket capacity restricted to 400lb
 - Bucket capacity with liner restricted to 350lb
 - Jib capacity as shown on load chart





DPM-52 Side Mount Winch & Jib

Achiever DPM-52 DU Dimensions

