

ACHIEVER DPM2-52 DU 57 ft TRACKED AERIAL with JIB DUAL UNIT BOOM SPECIFICATIONS

<u>GENERAL DATA</u>			
Max. working height	55'	Basket capacity	
with basket elevator	57'	(Jib not in use)	550 lbs
Max. side reach	31'-6"	(Jib in use)	400 lbs
Stowed travel height	9'-3" (approx.)	Max. jib and winch capacity	1,000 lbs
Extension boom travel	120"	Articulating arm travel	-0° to +80°
Main boom travel	-35° to +80°	Base installed weight	16,500 lbs (approx.)
Elevator travel	22"		
<u>STANDARD FEATURES</u>			
Center top mounted winch & jib		Basket rotator, winch, and jib controls with lockouts in upper control pod	
24" x 42" x 42" fiberglass basket with step		Lower control levers with upper control override	
Rubber boom support		Lower winch control	
Fiberglass extension boom		Deck step basket mounting	
Shear ball rotation gear		Hydraulic jib tilt	
Proportional, open center hydraulic controls		Manual jib extension	
Safety harness and 6' decelerating lanyard		Non-relube, maintenance-free bushings, spherical cylinder rod ends	
360° continuous rotation		Engine start/stop from basket	
180° basket rotator		46 KV category "C" insulation	
10 micron filter in return line		24" pedestal height for tracked vehicle mounting	
Hyd leveled basket (power stow at upper controls)		Epoxy primer with white finish color	
Hydraulic basket leveling at lower controls (2 nd location)		Two maintenance/operators manuals	
Upper 4 axis single hand joystick control lever		Two year parts and labor warranty	
<u>AVAILABLE BOOM OPTIONS</u>			
Boom:		Electrical:	
Main boom fiberglass insert (provides 14" of insulation when fully retracted)		Controls w/high electrical resistant components (HERC) - required for category "C"	
Articulating arm glass insert (12" insulation gap)		Boom overstay protection	
		12 volt emergency hydraulics: boom rotation, lowering and all outrigger functions	
Basket:		Hydraulic:	
Basket liner w/step (24" x 42" basket)		Hydraulically extendible jib	
Vinyl basket cover with lanyard		Tool circuit at basket, manual control	
Tool tray (8" X 19" X 9")		Tool circuit at base, manual control	
Tool tray (9" X 14" X 18")		Hose reel on deck	
Tool tray fiberglass (7" x 7" x 16")		Miscellaneous:	
		Additional manuals	
Controls Mounted between Basket & Boom		All Specifications + or - 2%	
CARRIER OPTIONS on PAGE 2			

DPM2-52 DU CARRIER OPTIONS & ACCESSORIES Cont'd

Cab Options Continued

1 Man Closed Cab ROPS certified to 24,000 lbs includes: Aluminum escape hatch Sliding left & right side window Cab heater & circulation fan Front windshield on/off wiper Door with dual locking system
Steel escape hatch for open or closed cab (adds FOPS Certification)
Front windshield intermittent wiper (closed cab)
Street side and / or curb side rear view mirror
Street side rear view mirror with electric heating
Sun visor
Back up camera with heated lens and 7" in-cab waterproof display
Outrigger deployed in-cab warning light
Driver's 3 point seat belt
Air suspension seat
Premium cab sound & heat insulation
Opening sunroof (hinged escape hatch with adjustable opening)
Tinted safety glass escape hatch with adjustable opening (not FOPS certified)
DC Comfort air conditioning 6,000 BTU/hr, 12V
GoLight Stryker spotlight on top of cab with guarding & in cab remote control

Engine & Cold Weather Options

Spark arrestor
Complete Cold Start - Includes: (can be purchased individually) Oil Heater with Cable & Plug Second Battery Cold Weather Oil for Engine & Hydraulic System (All Season)
12v engine coolant heater, 17,000 Btu with 7 day programmable timer
Extreme cold package for operations to -40 deg C/-40 deg F: 120v hydraulic oil heater, 120v battery heaters, 12vdc heated fuel filter, coolant heater for hydraulic oil, coolant heater for fuel tank, auxiliary cab heater, extreme cold torsion axles.
120v battery heater(s)
12vdc heated fuel filter
Coolant heater for hydraulic oil
Coolant heater for fuel tank

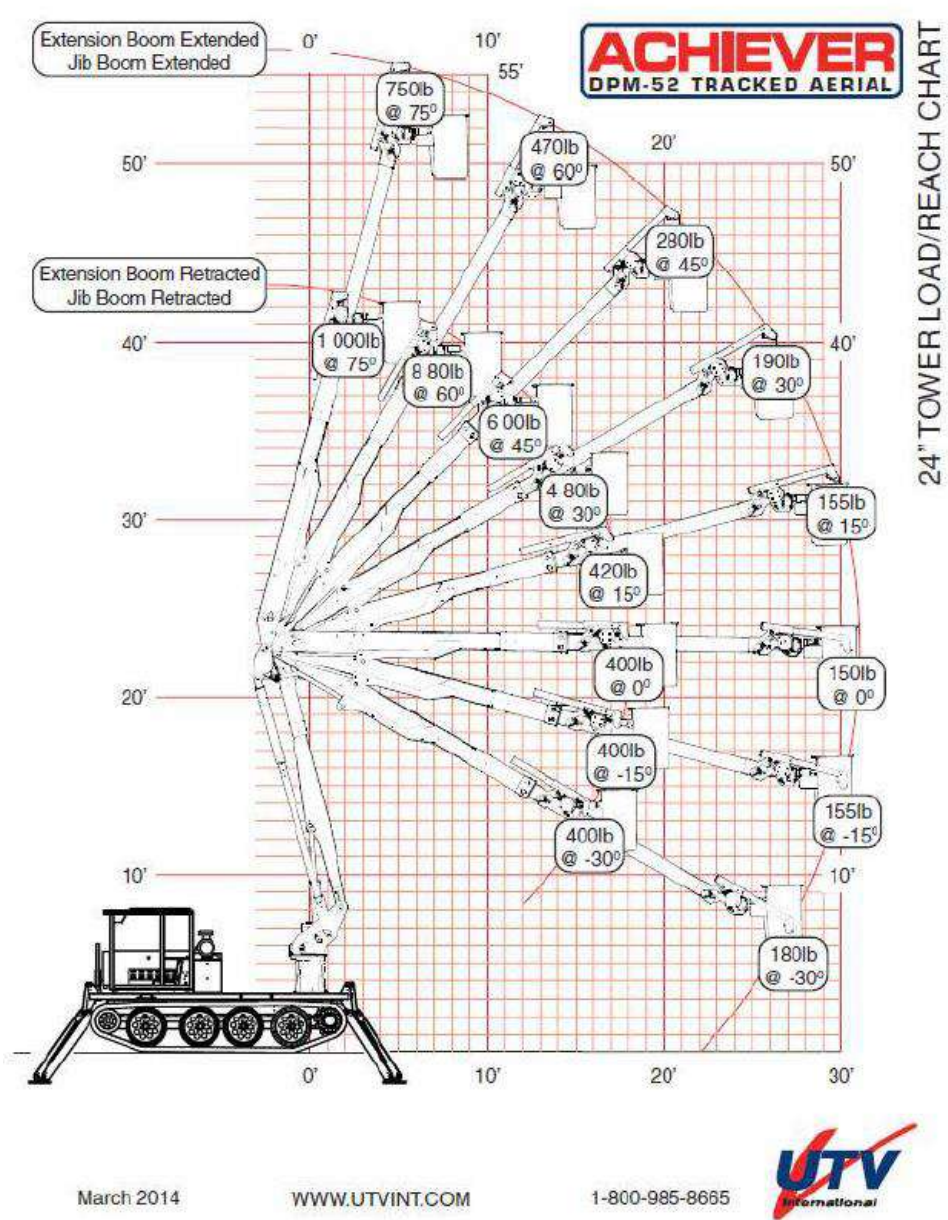
DPM2-52 DU CARRIER OPTIONS & ACCESSORIES Cont'd

Vehicle Options / Features

Front 2 way plow
Front bumper in place of plow
19" Height extension for plowing snow
Front plow blade with float position
Electric winch 12,000 lbs (front wiring only)
Electric winch 15,000 lb (front wiring only)
Electric winch 16,500 lbs (front wiring only)
Electric winch 17,500 lbs (front wiring only)
Electric winch rear wiring
(2) side receivers for electric winch with wiring
Winch, hydraulic 18,000 lbs, fixed front mount
Wire mesh screen on front LED work lights
Tool box on deck (front right side)
Anti-slip coating on deck
Change 59" to extra long front outriggers (71 In) for higher lift on hills w/18"x20" feet (allows deck levelling to within 5° on 12° slopes)
Change 59" to extra long rear outriggers (71 in) for higher lift on hills w/18" x 20" feet (allows deck levelling to within 5° on 12° slopes)
Ice cleats for outrigger feet (4 each foot)
(Set of 4) 24"x24"x1" soft outrigger pads with side deck storage
Outrigger mounted clearance lights
(8) road wheel oil hubs
DOT Road lighting
Change 29" to 33" rubber tracks
Ice claws for tracks (17 each side)
Hydraulic tools outlet on deck with hose reel with twin black hoses 3/8"(dia) x 30'(Lg) and flow control
Hydraulic tools outlet on deck with hose reel with twin orange dielectric hoses 3/8"(dia) x 30'(Lg) and flow control
Cable grounding reel on deck, spring loaded, 50 ft 1/0 black cable & clamp
1,800 watt gas powered portable generator / inverter with on deck storage
Pintle hook
Maintenance kit (high performance filter set for first 100 hour maintenance Return & Supercharge Filters)
Additional sets of boom and carrier manuals
Recommended spare parts for remote operations
One full day on site operations and maintenance training

Other options available upon request

ACHIEVER DPM2-52 DU 57 ft TRACKED AERIAL with JIB +22" Vertical with Elevator Up



BUCKET/JIB USAGE RESTRICTIONS

2 MAN BUCKET

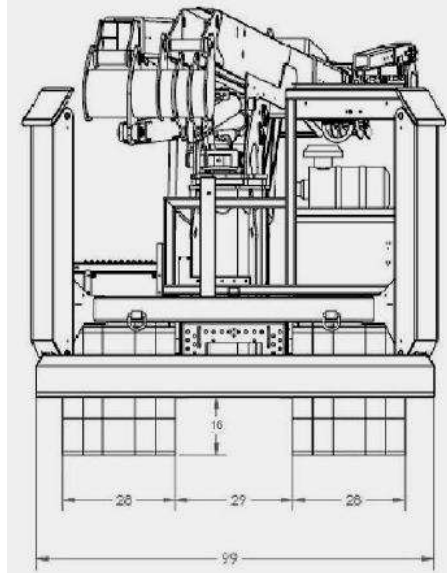
- Bucket capacity = 550lb
- Bucket capacity with liner = 500lb
- Jib use;
 - Bucket capacity restricted to 400lb
 - Bucket capacity with liner restricted to 350lb
 - Jib capacity as shown on load chart





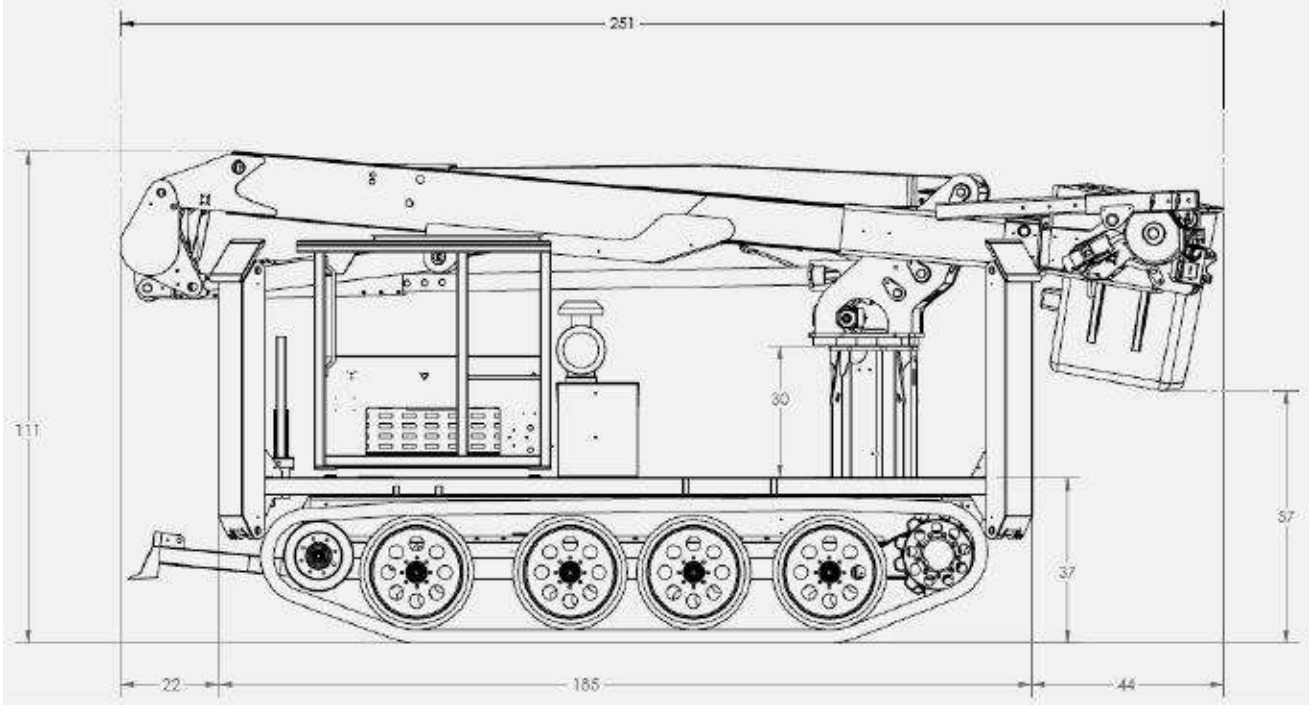
DPM2-52 Top Center Mount Winch & Jib with Elevator

Achiever DPM2-52 DU Dimensions



DUR-A-LIFT / UTV INTERNATIONAL

Achiever DPM2-52 DU Dimensions



Achiever DPM2-52 DU Accessibility

UTV CARRIER OUTFITTED WITH DUR-A-LIFT
RT02-DAL DPM2-52DU
MOUNTING PACKAGE

